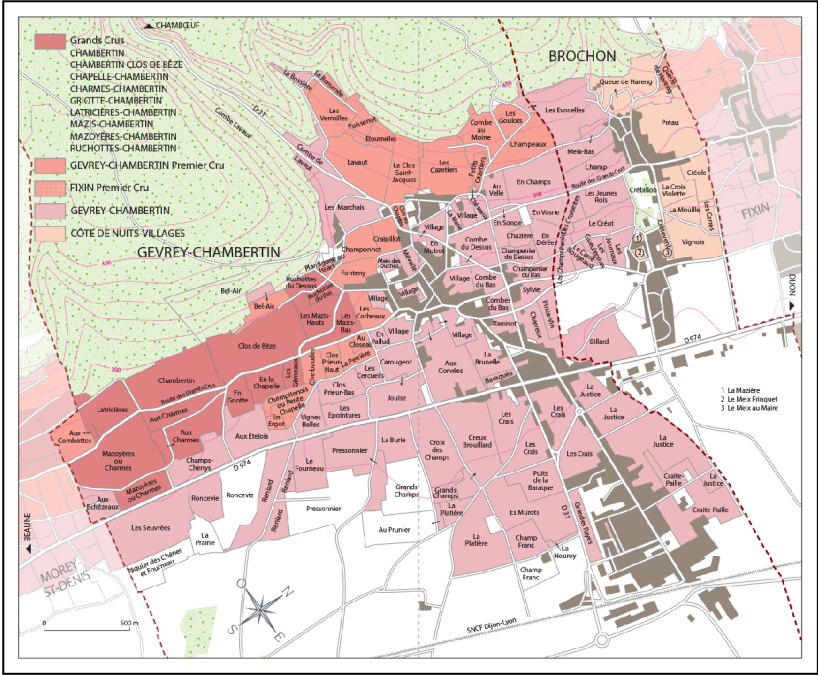


Grand Cru

Pinot Noir



LOCATION

Gevrey Chambertin is the most northern of the great communes of the Côte de Nuits. There are 26 Premiers Crus and 8 Grands Crus. Half of the Premiers Crus surrounds the Grands Crus (near Morey) ; the other half faces the north (near La Combe de Lavaux), with calcareous and clayey soils.

VINEYARD INFORMATION

The origin of Chambertin comes from one of the owners whose name was Bertin and who had the idea to plant vineyards close to the climat used by monks. Chambertin comes from Champ de Bertin. The Chambertin vineyard is situated on a chalky soil in the depth and clayey at the surface, which makes the wine both powerful and round.

VINIFICATION AND MATURATION

Destemmed grapes ferment in vats during 3 to 4 weeks. Aging takes place in oak barrels produced by our cooperage Cadus during 18 months.

GOOD TO KNOW



WINE SERVING TEMPERATURE

16-17



AGING POTENTIAL

20 years and more

